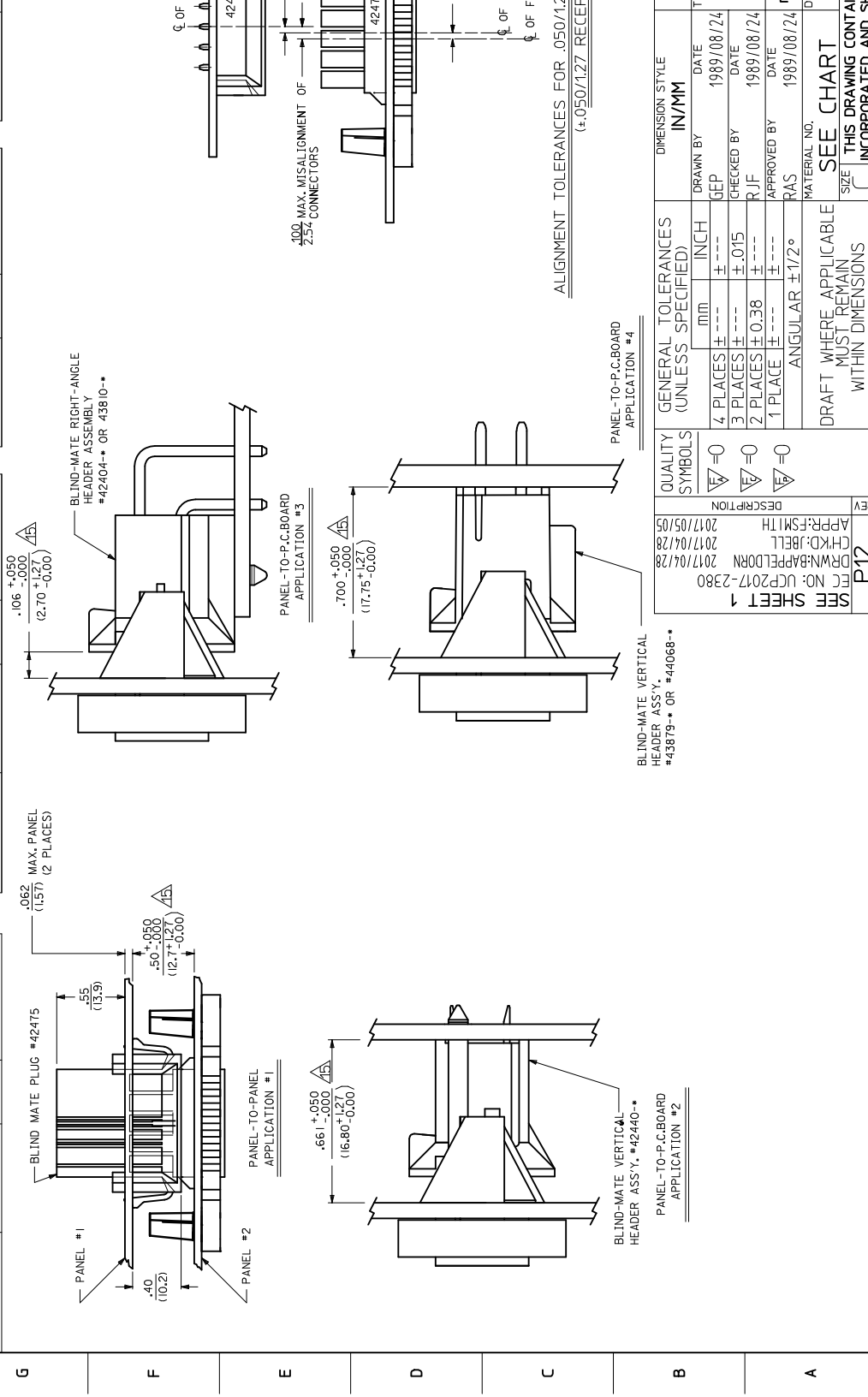




THE DATASHEET OF
15-06-0241



13	12	11	10	9	8	7	6	5	4		
PART NUMBER	ENG. NUMBER	CKT. SIZE	MATERIAL (SEE NOTE 1.)	PART NUMBER	ENG. NUMBER	CKT. SIZE	MATERIAL (SEE NOTE 1.)	ITEM NUMBER	CKT. SIZE	MATERIAL (SEE NOTE 1.)	ITEM NUMBER
J	NOT TOOLED	42474-0211	94V-2	NOT TOOLED	42474-0221	2	94V-0	NOT TOOLED	2	94V-2	NOT TOOLED
	15-06-0040	42474-0411	94V-2	15-06-0041	42474-0421	4	94V-0	42474-0431	4	94V-2	42474-0441
	15-06-0060	42474-0611	94V-2	15-06-0061	42474-0621	6	94V-0	42474-0631	6	94V-2	42474-0641
	15-06-0080	42474-0811	94V-2	15-06-0081	42474-0821	8	94V-0	42474-0831	8	94V-2	42474-0841
I	15-06-0100	42474-1011	94V-2	15-06-0101	42474-1021	10	94V-0	42474-1031	10	94V-2	42474-1041
	NOT TOOLED	42474-1211	94V-2	NOT TOOLED	42474-1221	12	94V-0	NOT TOOLED	12	94V-2	NOT TOOLED
	15-06-0140	42474-1411	94V-2	15-06-0141	42474-1421	14	94V-0	42474-1431	14	94V-2	42474-1441
	NOT TOOLED	42474-1611	94V-2	NOT TOOLED	42474-1621	16	94V-0	NOT TOOLED	16	94V-2	NOT TOOLED
H	15-06-0180	42474-1811	94V-2	15-06-0181	42474-1821	18	94V-0	42474-1831	18	94V-2	42474-1841
	NOT TOOLED	42474-2011	94V-2	NOT TOOLED	42474-2021	20	94V-0	NOT TOOLED	20	94V-2	NOT TOOLED
	NOT TOOLED	42474-2211	94V-2	NOT TOOLED	42474-2221	22	94V-0	NOT TOOLED	22	94V-2	NOT TOOLED
	15-06-0240	42474-2411	94V-2	15-06-0241	42474-2421	24	94V-0	42474-2431	24	94V-2	42474-2441



13	12	11	10	9	8	7	6	5	4		
PART NUMBER	ENG. NUMBER	CKT. SIZE	MATERIAL (SEE NOTE 1.)	PART NUMBER	ENG. NUMBER	CKT. SIZE	MATERIAL (SEE NOTE 1.)	ITEM NUMBER	CKT. SIZE	MATERIAL (SEE NOTE 1.)	ITEM NUMBER
J	NOT TOOLED	42474-0211	94V-2	NOT TOOLED	42474-0221	2	94V-0	NOT TOOLED	2	94V-2	NOT TOOLED
	15-06-0040	42474-0411	94V-2	15-06-0041	42474-0421	4	94V-0	42474-0431	4	94V-2	42474-0441
	15-06-0060	42474-0611	94V-2	15-06-0061	42474-0621	6	94V-0	42474-0631	6	94V-2	42474-0641
	15-06-0080	42474-0811	94V-2	15-06-0081	42474-0821	8	94V-0	42474-0831	8	94V-2	42474-0841
I	15-06-0100	42474-1011	94V-2	15-06-0101	42474-1021	10	94V-0	42474-1031	10	94V-2	42474-1041
	NOT TOOLED	42474-1211	94V-2	NOT TOOLED	42474-1221	12	94V-0	NOT TOOLED	12	94V-2	NOT TOOLED
	15-06-0140	42474-1411	94V-2	15-06-0141	42474-1421	14	94V-0	42474-1431	14	94V-2	42474-1441
	NOT TOOLED	42474-1611	94V-2	NOT TOOLED	42474-1621	16	94V-0	NOT TOOLED	16	94V-2	NOT TOOLED
H	15-06-0180	42474-1811	94V-2	15-06-0181	42474-1821	18	94V-0	42474-1831	18	94V-2	42474-1841
	NOT TOOLED	42474-2011	94V-2	NOT TOOLED	42474-2021	20	94V-0	NOT TOOLED	20	94V-2	NOT TOOLED
	NOT TOOLED	42474-2211	94V-2	NOT TOOLED	42474-2221	22	94V-0	NOT TOOLED	22	94V-2	NOT TOOLED
	15-06-0240	42474-2411	94V-2	15-06-0241	42474-2421	24	94V-0	42474-2431	24	94V-2	42474-2441

tb_frames_C.P.A.M.T
Rev. F 2009/06/16

QUALITY SYMBOLS	GENERAL TOLERANCES (UNLESS SPECIFIED)	INCH	M/M
$\nabla = 0$	4 PLACES \pm ---	\pm ---	\pm ---
$\nabla = 0$	3 PLACES \pm ---	\pm .015	\pm .015
$\nabla = 0$	2 PLACES \pm 0.38	\pm ---	\pm ---
$\nabla = 0$	1 PLACE \pm ---	\pm ---	\pm ---
	ANGULAR \pm 1/2°		

GENERAL TOLERANCES (UNLESS SPECIFIED)	INCH	M/M
DRAWN BY	GEP	1989/08/24
CHECKED BY	RJF	1989/08/24
APPROVED BY	RAS	1989/08/24

DATE	BY
1989/08/24	GEP
1989/08/24	RJF
1989/08/24	RAS

ALIGNMENT TOLERANCES FOR .050/1.27 RECEIVERS

SEE SHEET 1

EC NO: UCP2017-2380

DRM:BAPELDRN 2017/04/28

CHKD:JBELL 2017/04/28

APP:FSMITH 2017/05/05

REV DESCRIPTION

P12

SEE SHEET 1

DRAFT WHERE APPLICABLE MUST REMAIN WITHIN DIMENSIONS

SIZE THIS DRAWING CONTAINS INCORPORATED AND SI

tb_frames_C.P.A.M.T
Rev. F 2009/06/16

Looking for pricing, stock, or lifecycle information?

Click below to explore more details on WIN SOURCE:

 [View 15-06-0241 on WIN SOURCE](#)

 [Molex, LLC Information](#)

Optimize Your Supply Chain with WIN SOURCE Solutions

-  Global Sourcing Solution
-  Obsolete Management
-  Cost Control Management
-  Shortage Management
-  Alternative Solution
-  Excess Inventory Management